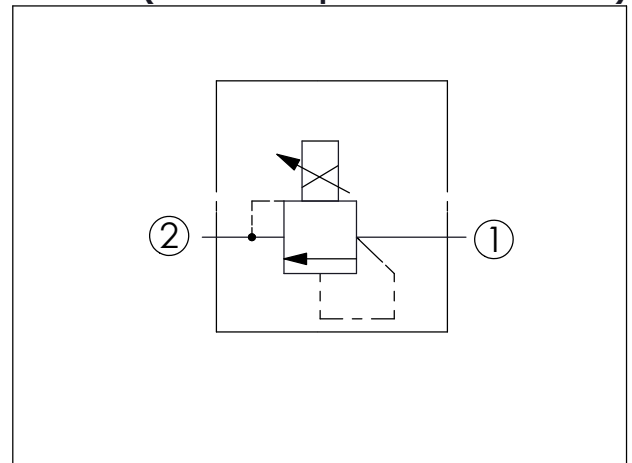
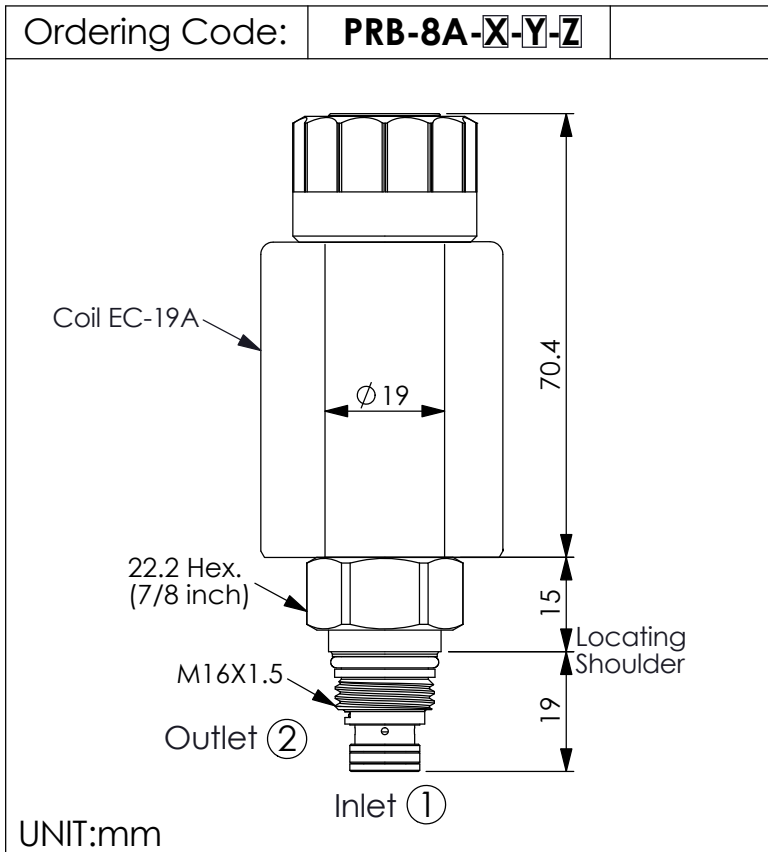


PILOT CONTROL VALVE (Electro-Proportional Pilot Relief)



TECHNICAL DATA

Max. Operating pressure: 350 bar

Rated flow: 1 l/min

Cavity-Tooling: 8A-2

Installation torque: 27-33 Nm

Weight: 0.16 kg (Without Coil)

Coils must be ordered separately

Maximum Valve Leakage at Reseat: 25 c.c./min
Back pressure on the tank port (port 2) is directly additive at a 1:1 ratio to valve setting

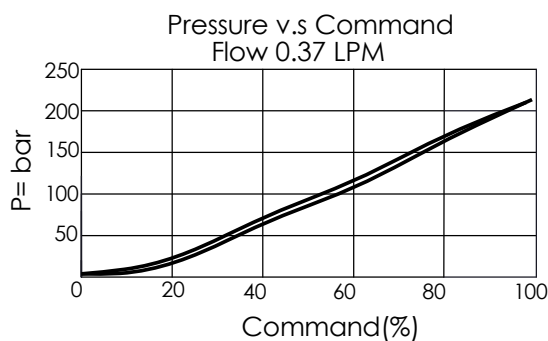
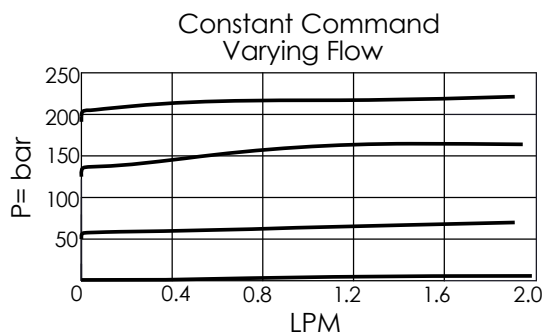
Hysteresis with DC input < 8%

Hysteresis with dither < 4%

Linearity with dither < 2%

Dither should be adjustable between 80-300Hz
(Recommended dither frequency 140Hz)

Reseat exceeds 85% of cracking pressure.



Y	SPRINGS	
	ADJUSTMENT RANGES	
A	20 to 210 bar	
B	10.5 to 105 bar	
D	3.5 to 50 bar	
W	35 to 350 bar	

X	OPERATION	
2D	2 Ports - 22 Watt. Coil Ø 19 mm tube	

Z	OPTIONS	
N	Non-adjustable	
P	Push Style Manual Override	