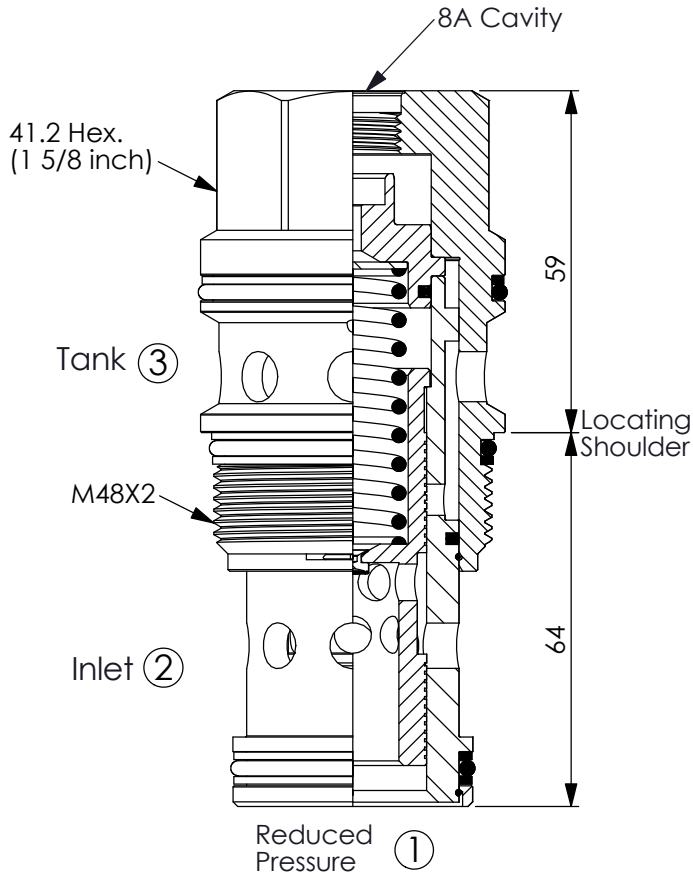
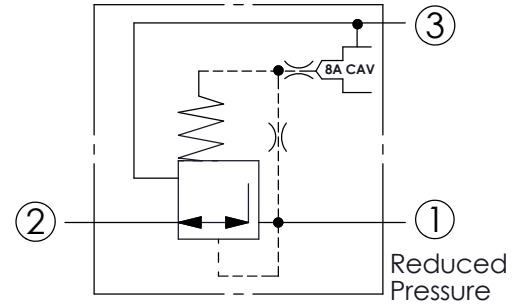


(Pilot operated, pressure reducing/relieving main stage with integral 8A control cavity)

Ordering Code: **PP-19A-X-Y-8**

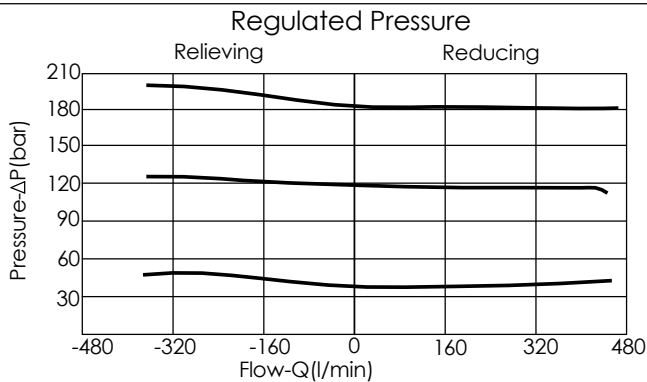


UNIT:mm



TECHNICAL DATA

Max.Operating pressure:	350	bar
Rated flow:	320	l/min
Cavity-Tooling:	19A-3	
Installation torque:	475-500	Nm
Weight:	1.03	kg



X

OPERATION

30

Standard Type

Y

SPRINGS

MINIMUM CONTROL PRESSURE

D

1.7 bar (25 psi)

W

7 bar (100 psi)

Maximum inlet pressure is determined by the bias spring. The D spring is limited to 140 bar (2000 psi) maximum differential pressure and the W spring is limited to 350 bar (5000 psi) maximum inlet pressure.