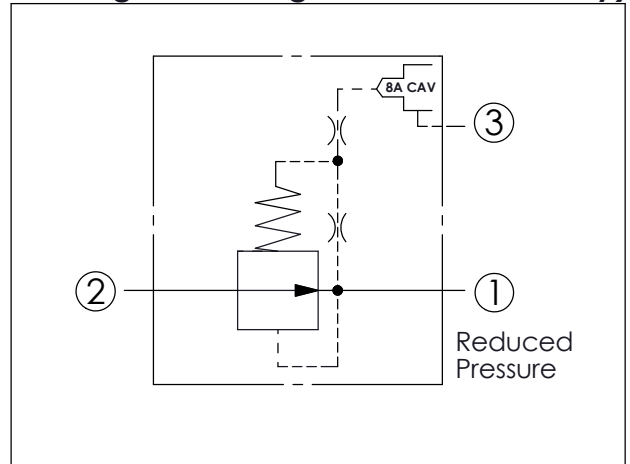
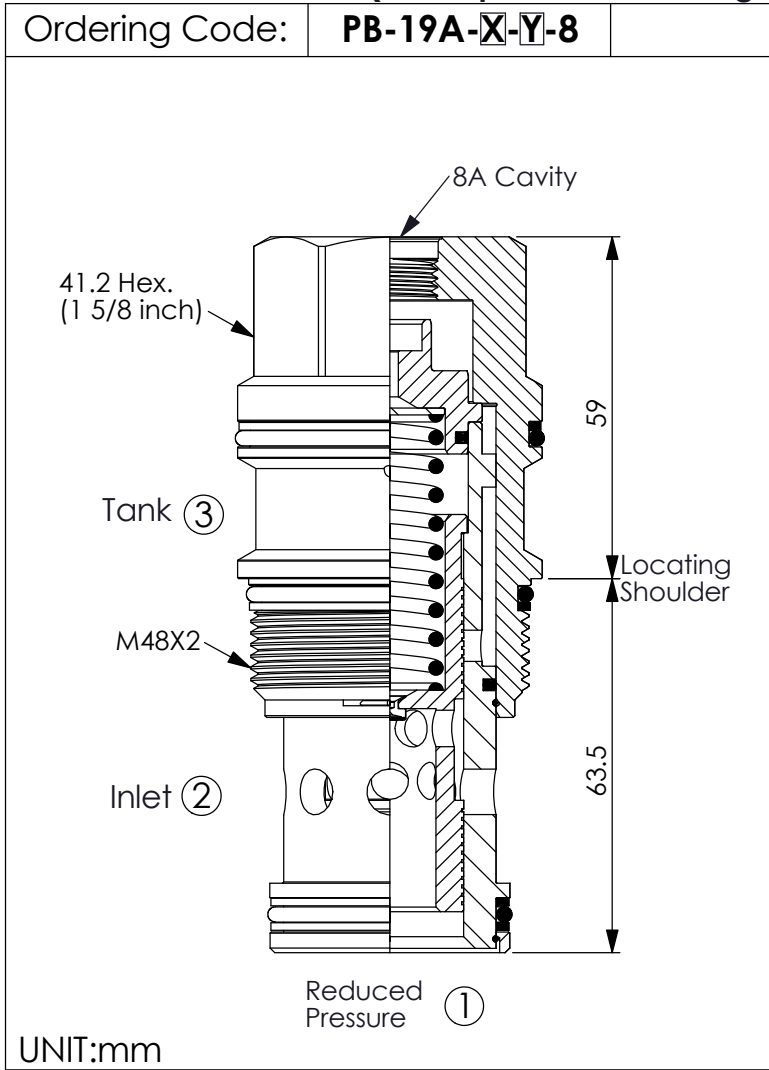
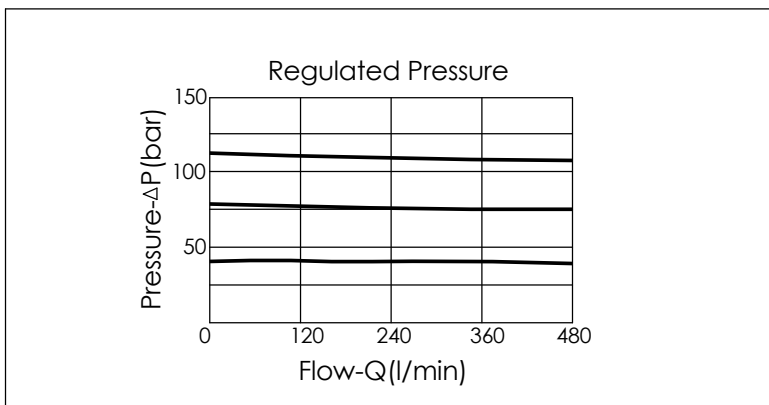


REDUCING VALVE (Pilot Operated Reducing main stage with integral 8A control cavity)



TECHNICAL DATA		
Max.Operating pressure:	350	bar
Rated flow:	320	l/min
Cavity-Tooling:	19A-3	
Installation torque:	475-500	Nm
Weight:	1.05	kg



X	OPERATION	
30	Standard Type	

Y	SPRINGS	
	MINIMUM CONTROL PRESSURE	
D	1.7 bar (25 psi)	
W	7 bar (100 psi)	
	Maximum inlet pressure is determined by the bias spring. The D spring is limited to 140 bar (2000 psi) maximum differential pressure and the W spring is limited to 350 bar (5000 psi) maximum inlet pressure.	

--	--	--