

Ordering Code: **HP-10W-X-Y-Z**

2.54 Hex. (1 inch)

7/8"-14UNF-2A

130

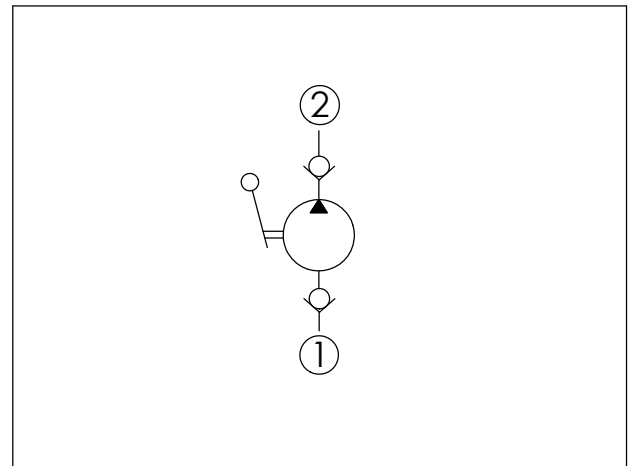
162

32

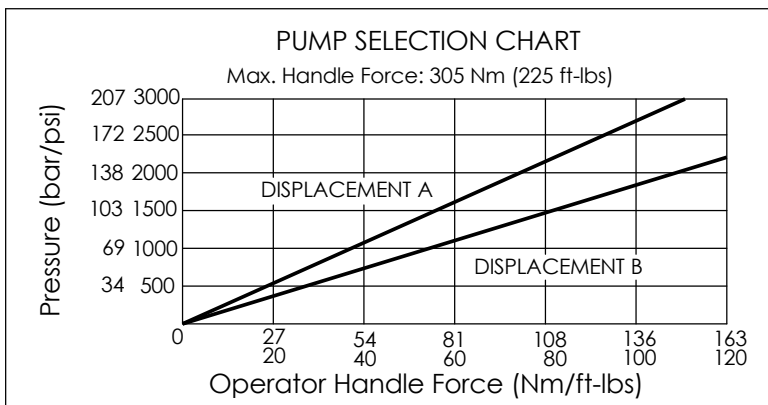
②

①

UNIT:mm



TECHNICAL DATA	
Max. Operating Pressure:	210 bar
Flow:	Up to 10.6 c.c. per stroke
Cavity-Tooling:	10W-2
Installation torque:	35-45 Nm
Weight:	0.83 kg
Lever must be ordered separately.	
Lever order code no. :	7GYAG001
Lever length :	405 mm



X	OPERATION
20	Push to pressurize

Y	DISPLACEMENT
A	7.4 c.c. per stroke
B	10.6 c.c. per stroke

Z	OPTION
N	Non-adjustable